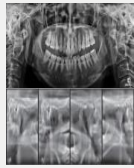


3-in-one Solution with

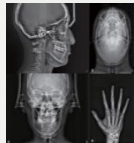
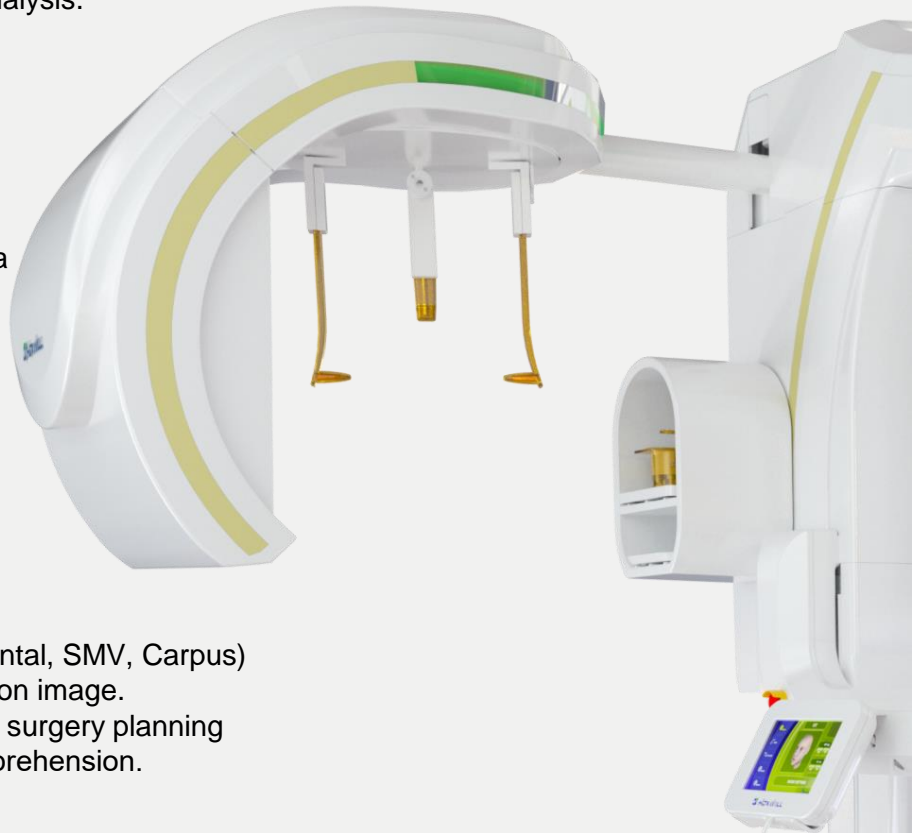


Cone Beam CT with 360° of scan enables to obtain full arch in one scan. A wide range of FOV choices helps to diagnose Bilateral-TMJ and also up to Nasion & Glabella for 3D Analysis.

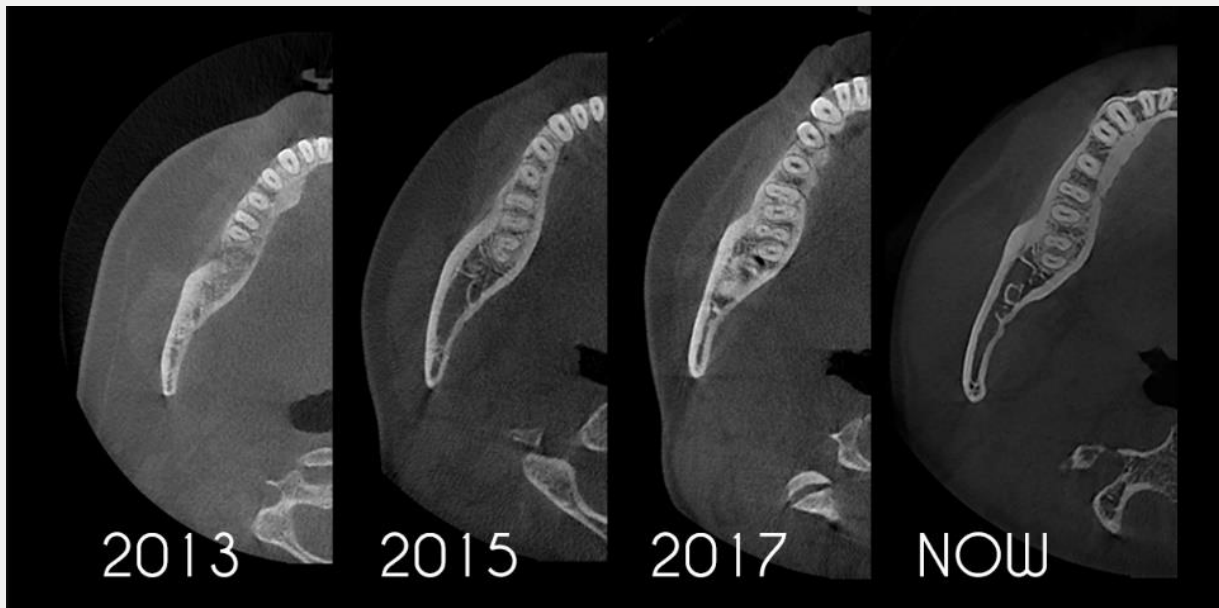
DENTRI α



Besides essential Panorama view, special function of TMJ view is available with minimum distortion and artifact.



Various modes (Lateral, Frontal, SMV, Carpus) are provided in high resolution image. Tracing software with virtual surgery planning will assist the patient's comprehension.



“Ongoing” Development in Advanced Reconstruction creates superior images without hardware changes.

DENTRI α

3-in-1 Dental X-ray System

Outstanding Image Quality



Wider Detector

- Advanced stitching technology for a wide range of FOV up to 16X14.5, available from chin to the forehead.

Low Dose Mode

- UFS (Ultra fast scan) to shorten the scan time 1/3 and decrease radiation exposure.

Free FOV

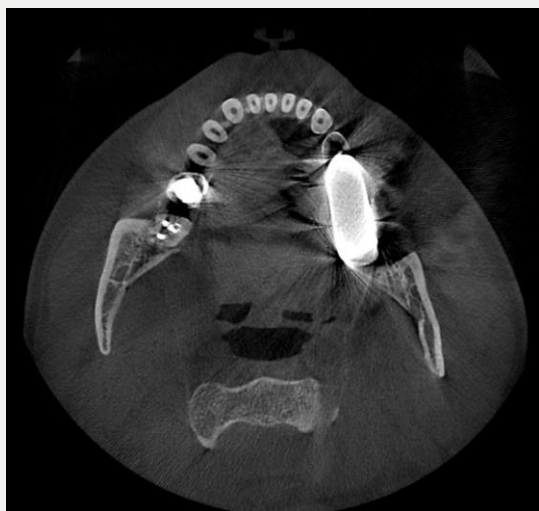
- Adjustable FOV selection to reduce the radiation dose and boost the resolution

High Capacity Tube Voltage

- Wide range of adjustment available for Tube Voltage (from 60 to 110kv), which prevents the overheat of device.

Remarkable MAR Algorithm

- Superior algorithm for metal artifact reduction to help more accurate diagnosis.



Without MAR



With MAR